

viewlite^x

58.810

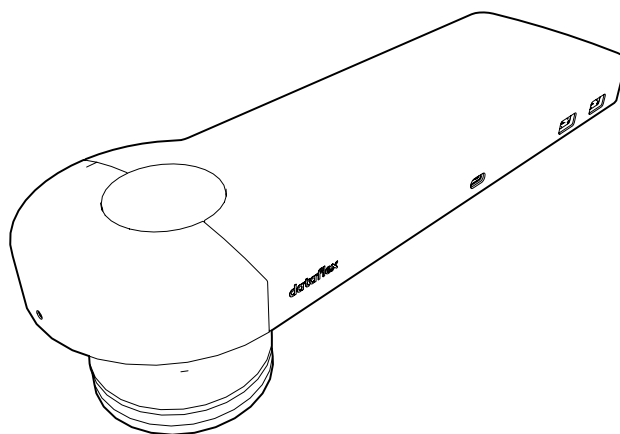
58.812

58.813

58.910

58.912

58.913

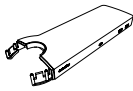


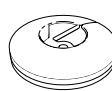




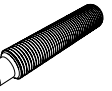
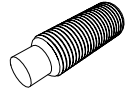
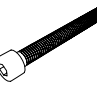

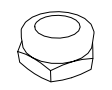
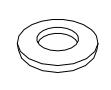
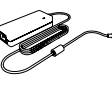
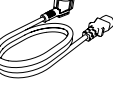






3.0

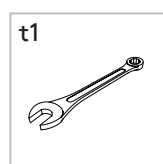
Installation manual/Installatie handleiding
Installations-handbuch/Manuel d'installation
Manuale d'installazione/Manual de instalación

T +31 180 515444
F +31 180 518540
info@dataflex-int.com
www.dataflex-int.com

Parts/Onderdelen/Teile/Pièces/Parti/Partes

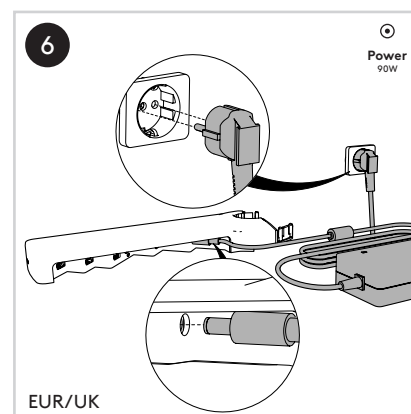
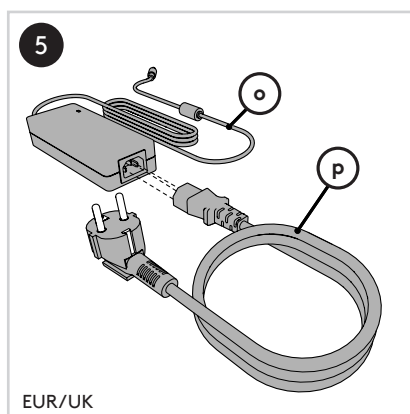
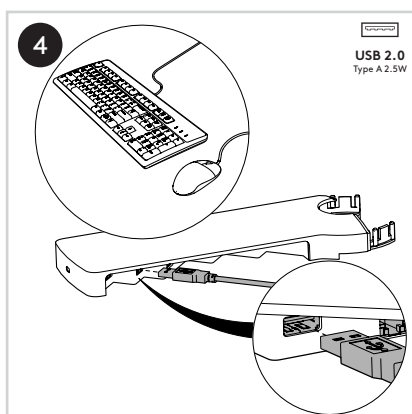
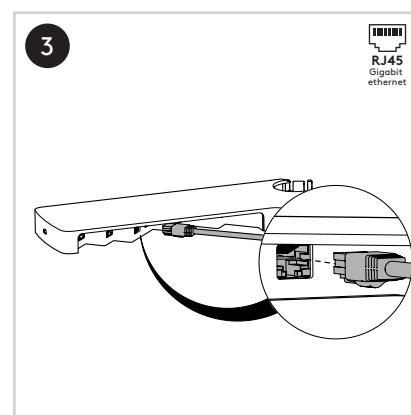
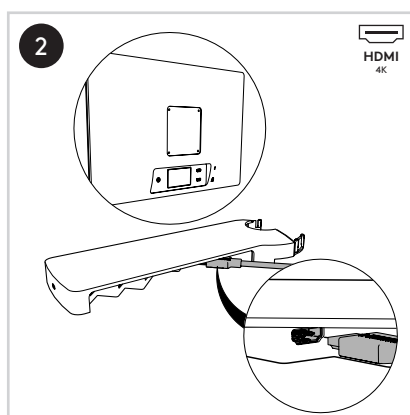
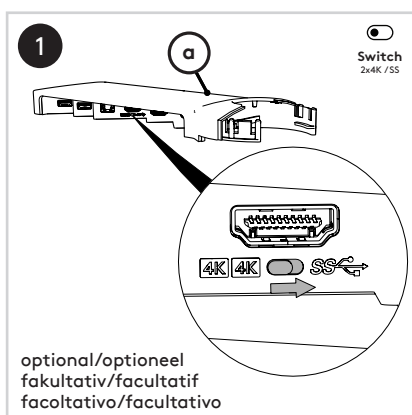
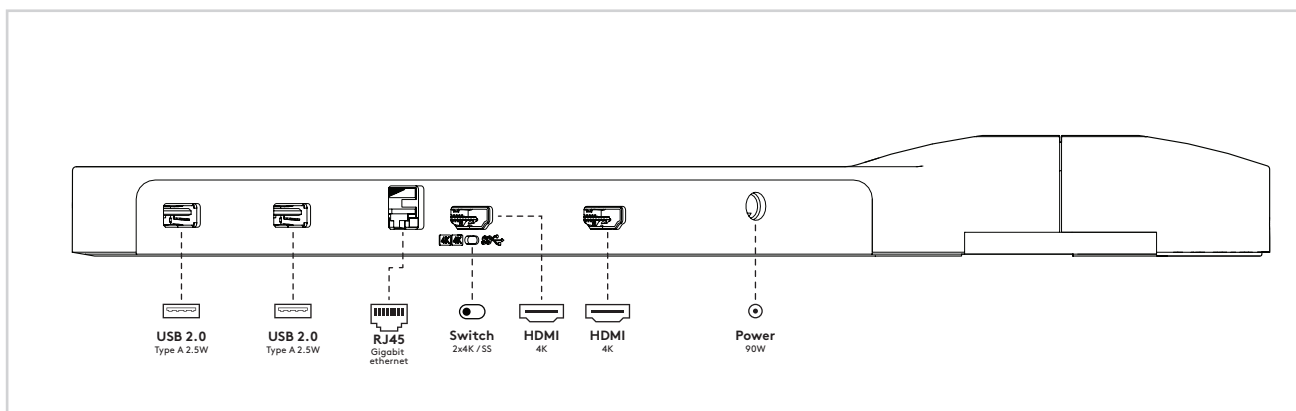
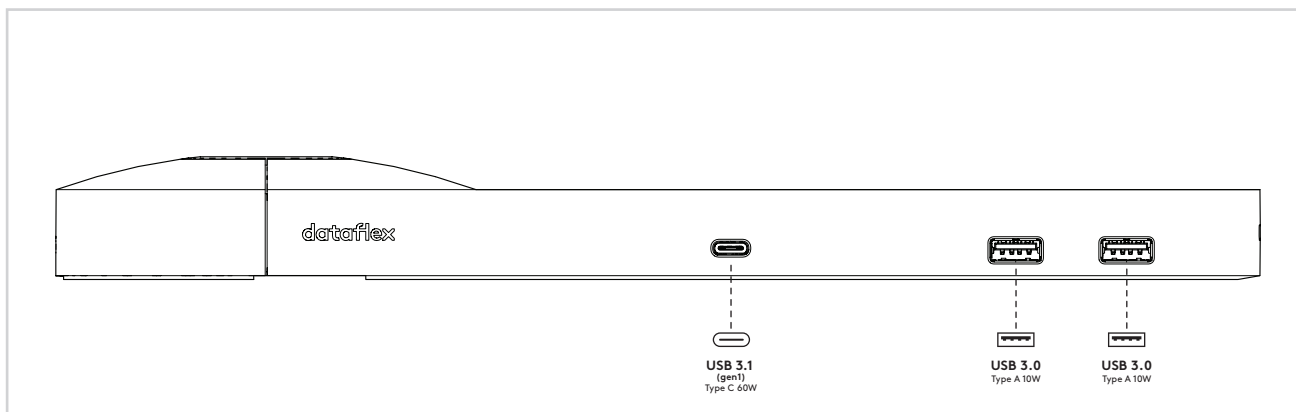
a  1x	b  1x	c  1x	d  1x	e  1x	f  1x	g  1x	h  1x	i  1x
j  1x	k  1x	l  1x	m  1x	n  1x	o  1x	p  EUR/UK 1x	q  1x	r  6 mm 1x
s  5 mm 1x	t  2 mm 1x							

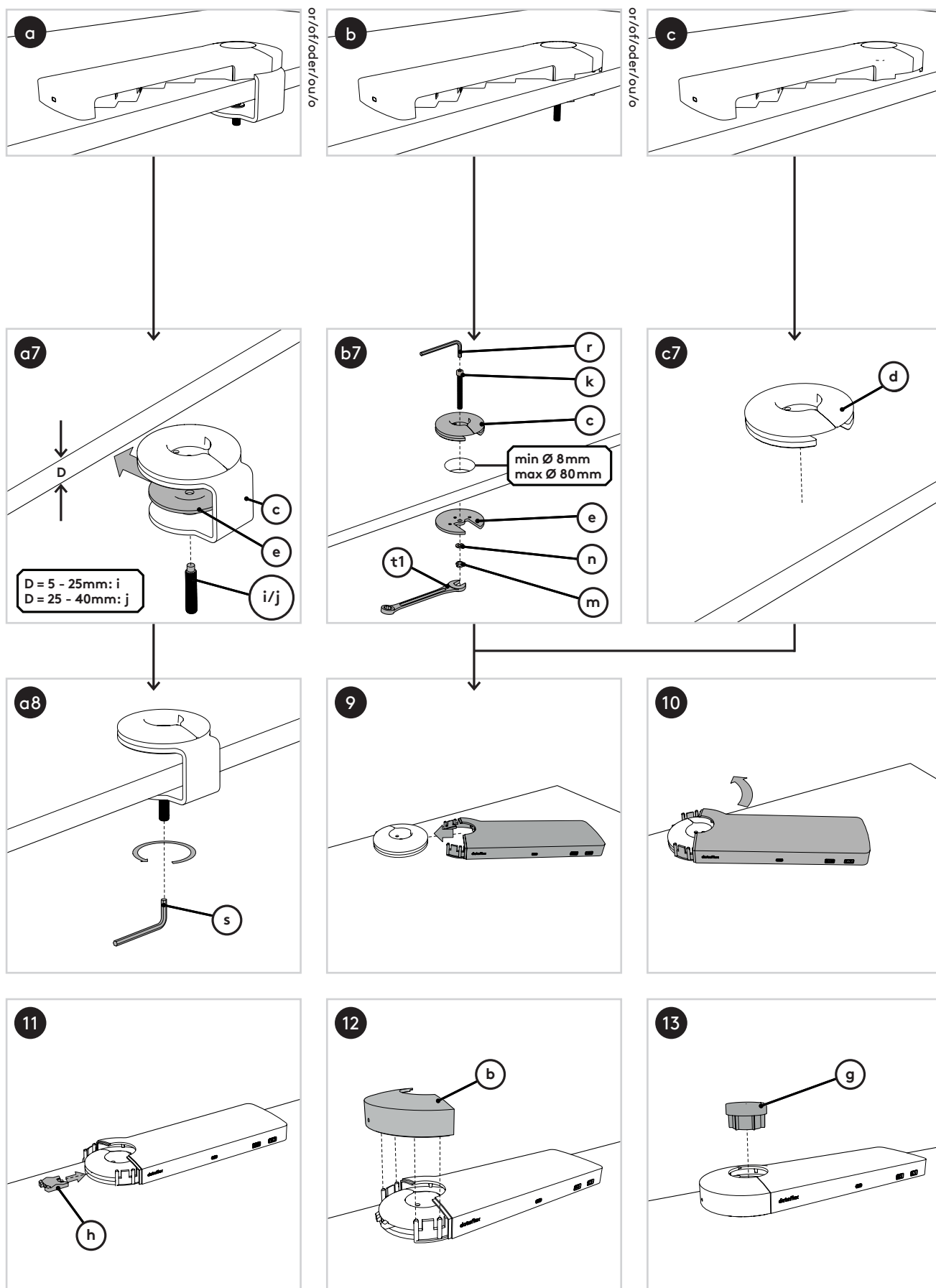
Required tools/Benodigd gereedschap/Benötigtes Werkzeug/Outils requis/Strumenti necessari/Herramientas necesarias

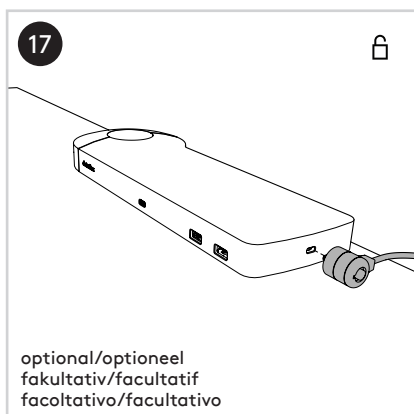
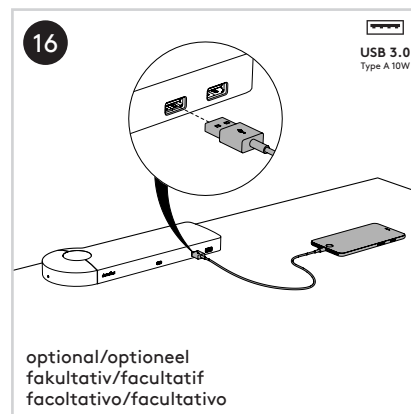
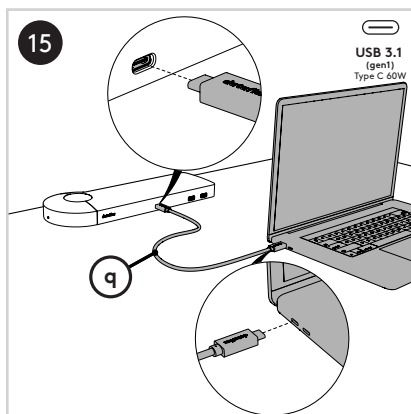
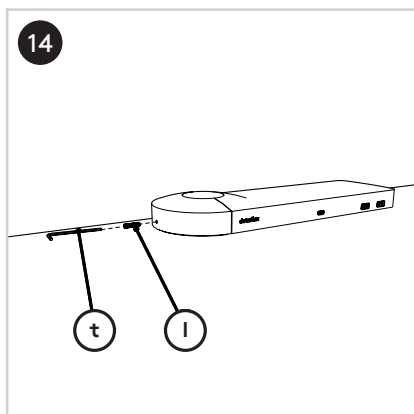


dataflex^x

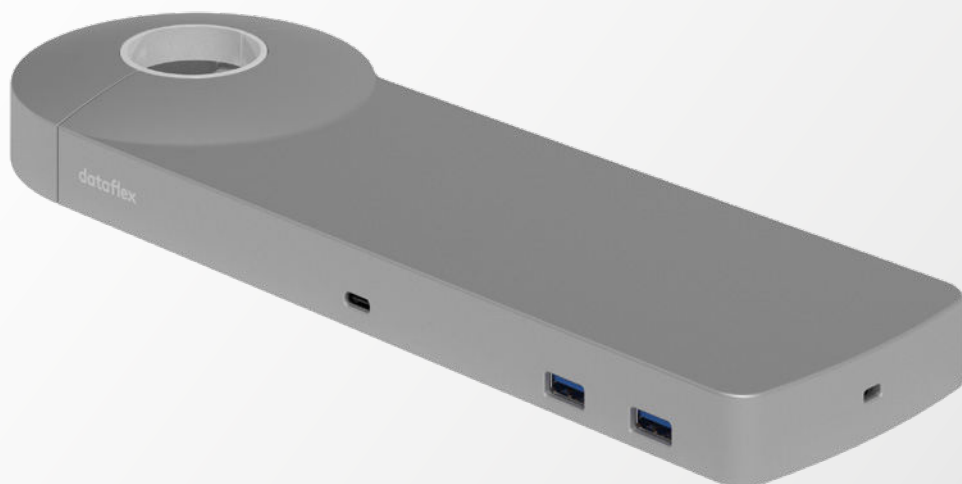
feeling at work







No rights can be derived from this publication/
Aan deze uitgave kunnen geen rechten worden
ontleend/Aus dieser Ausgabe können keine
Rechte abgeleitet werden/Aucun droit ne peut
découler de cette publication/Dal presente
documento non deriva alcun diritto/Del
contenido de esta publicación no podrá
derivarse ningún derecho



User manual

Viewlite link

v1.0

User manual

Copyright © 2018 – Dataflex International BV

T +31 180 515444

F +31 180 518540

info@dataflex-int.com

www.dataflex-int.com

Table of contents

1. General information	4
1.1 Introduction	4
1.2 General use warnings	4
1.2.1 Safety Instructions	5
1.2.2 Installation and maintenance instructions	6
1.3 Laptop check	6
1.4 Terminology definitions	7
2. Description of ports	8
2.1 Front	8
2.2 Back	8
2.3 Side	8
3. Before use	10
4. Using Link	11
4.1 Selecting the desired mode	11
4.2 Connecting a display device	13
4.3 Connecting to a network	13
4.4 Connecting USB 2.0 peripheral equipment	13
4.5 Connecting USB 3.1 peripheral equipment	14
4.6 Connecting to the power supply	14
4.7 Connecting your device	14
4.8 Connecting security devices	15
4.9 Configuring your display device	15
4.9.1 Windows	15
4.9.2 macOS	16
5. Technical support and guarantee	17
5.1 Troubleshoot	17
5.1.1 Common usage and connection problems	17
5.1.2 Video/audio problems	18
5.2 Specifications	19
5.2.1 Dimensions and weight	19
5.2.2 Interface	19
5.2.3 Power	19
5.2.4 Energy consumption	19
5.2.5 System requirements	19
5.2.6 Environment	19
5.2.7 Certification	19
5.3 Guarantee information	20
5.4 Contact	20

1. General information

1.1 Introduction

Easily connect your laptop or tablet to any modern workstation. Charge your devices, connect to any network and two monitors. Link's USB-C technology makes it all possible within seconds, with just one cable.

1.2 General use warnings

- Read the separate Link installation manual carefully and familiarise yourself with the product before use.
- Avoid the use of Link in extremely hot or cold environments. A safe temperature is between 5 °C - 35 °C.
- Avoid the use of Link in humid environments. Humidity and condensation can accumulate in the product and cause damage to the electric components.
- Only use the power adaptor provided with Link. Excessive or inadequate power can result in unstable performance or failure of the device.
- For optimal compatibility, use the included Dataflex USB-C cable.

1.2.1 Safety Instructions

WARNING! The following instructions related to safety should be read fully and carefully! Failure to follow these safety instructions can lead to serious personal injury or material damage.

- Make sure other users of the product also have access to this manual in order to guarantee the safe use of the product.
- If the product is reinstalled after being previously used, the instructions should always be consulted again.
- You are urgently advised to have the product installed by experienced technicians.
- If the product is intended for mounting on another product, such as a monitor, computer or tablet, the installation instructions provided with that product must also be followed closely.
- If in doubt as to the correct installation method or if there is a contradiction between the installation instructions in this document and those provided with another product, the product should not be installed and/or used. In that case, contact the supplier.
- Keep the product and packaging materials out of reach of children! The product is equipped with small parts, which could be swallowed and may cause death by suffocation.
- It is very important that any of the product's rotating/moveable parts can move unimpeded.
- Although the product has been designed and produced with the utmost care, the risk of body parts such as fingers becoming trapped can never be fully excluded. Therefore, always install and use the product cautiously and carefully.

1.2.2 Installation and maintenance instructions

- These general Installation and Maintenance Instructions are supplementary to the instructions provided with the product, such as installation instructions, and are not intended as a replacement.
- Under no circumstances make any alternations to the product. If the product does not meet the needs or requirements for which it was acquired, it should not be used.
- Before installation, the adequacy (conditions) of the surface on, to or against which the product will be placed must be checked (thickness, solidity and stability).
- Select the diameter and depth of any mounting holes so that all plugs and screws can be secured firmly and without any problems. Before drilling mounting holes, check there are no electricity, water or other pipes running behind the mounting surface.
- During use, regularly check if the screw connections of the mounted product are still securely attached to the surface. These connections can become loose through frequent movement.
- If the condition of the product is such that the product can no longer be used safely, for example through wear and tear, the product must be taken out of use and care must be taken that it can no longer be operated, even inadvertently or unwittingly by others.
- With moveable/adjustable products, take care that the installed product can move unimpeded around its axis.
- Cleaning instructions: do not use corrosive or abrasive substances – use only a damp cloth.

1.3 Laptop check

Go to the Link product page on our website to read about the Link laptop check. This easy test lets you check whether your device is 100% suitable for use with Link.

www.dataflex-int.com/en/link

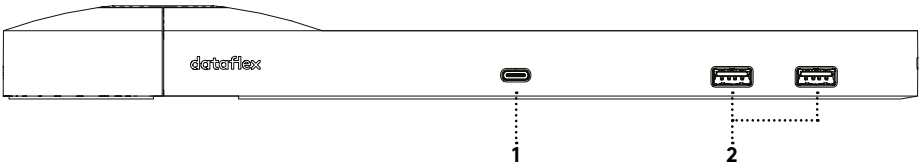
1.4 Terminology definitions

Device:	Electronic device, such as a laptop or tablet, with a USB-C port.
Peripheral equipment:	Electronic equipment, such as a keyboard, mouse or storage medium, that only functions in combination with your device.
Display device:	A monitor or digital projector.
Link:	Viewlite USB-C docking station.
Full HD:	Display device resolution of 1920 x 1080.
2K:	Display device resolution of 2048 x 1080.
4K:	Display device resolution of 4096 x 2160.
HighSpeed:	Data speed of 480 Mbit/s.
SuperSpeed:	Data speed of 5 Gbit/s.
Dual 4K mode:	Switch function that sets the resolution of your display device to a maximum of dual 4096 x 2160.
SuperSpeed mode:	Switch function that sets Link's data speed to SuperSpeed mode.
Port:	Facility for the connection of cables/devices to enable the transfer of data, image information and power.

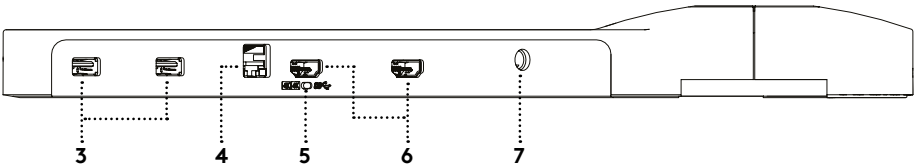
2. Description of Ports

The following overview provides a list of all ports in Link.

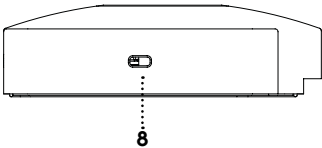
2.1 Front



2.2 Back



2.3 Side



Port		Standard	Symbol	Description	Capacity
1	USB Type C	3.1 Gen 1		Connects your device to Link. This port enables the transfer of data, visual information and power. Take note: Dataflex recommends using the included Dataflex USB-C cable to connect your device to Link. This ensures the best possible use of all the possibilities offered by Link.	60W (20V x 3A)
2	USB Type A	3.1 Gen 1		Connects your peripheral equipment to Link. This port enables the transfer of data and power. Offers SuperSpeed support.	10W (5V x 2.1A)
3	USB Type A	2.0		Connects your peripheral equipment to Link. This port enables the transfer of data and power. Offers HighSpeed support.	2,5W (5V x 0.5A)
4	Network connector	RJ-45		Connects Link to a network or the Internet via an Ethernet cable.	
5	Dual 4K/Super-Speed switch			Makes it possible to switch between different modes. This switch affects the maximum screen resolution, screen refresh rate, USB and Ethernet speed. See 4.1 Selecting the desired mode for more information. Take note: After switching, it is important to reconnect the device using the USB-C cable.	
6	HDMI	1.4		Connects a maximum of two display devices to Link.	
7	Power	DC		Connect Link to the power supply using the adapter and cable provided.	90W (24V x 3,75A)
8	Safety	Kensington		Facility for connecting a Kensington lock to protect Link from theft. Take note: Lock not included.	

3.Before use

Before using **Link**, check to make sure your **device** meets the following conditions at the time of use:

Your device – Processor: For optimal performance, use **Link** with a **device** equipped with an Intel Kaby lake processor, 7th generation or newer. See the specifications for your **device** for this information.

Your device – USB-C port: Check whether your **device** is equipped with a USB Type C **port**. Without this **port**, you cannot use the **Link** functionalities.

Your device – BIOS: Make sure your **device’s** BIOS is running with the latest updates. See the specifications for your **device** for this information.



Your device – Operating system: Make sure the operating system is up-to-date. See the specifications for your **device** for this information.


4. Using Link

Link is highly intuitive. To ensure that you make the most of the possibilities offered by **Link**, we recommend reading through this chapter carefully before first use.

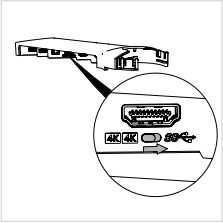
4.1 Selecting the desired mode




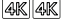
The dual **4K/SuperSpeed** switch (see table 2.2) allows **Link** to offer the possibility of two different modes. You decide whether you want to use the highest USB and Ethernet speeds or prefer to use the highest screen resolutions.

Dual 4K mode: If the switch is set to dual **4K**  , **Link** supports two **display devices** at **4K** screen resolution, with a maximum USB speed of 480 Mbit/s.

SuperSpeed mode: If the switch is set to **SuperSpeed** , **Link** supports a maximum of one **display devices** at **4K** screen resolution or two **display devices** at **2K** screen resolution, with a maximum USB speed of 5 Gbit/s.

See the table below for an overview of all possible resolutions and the corresponding speeds.



Number of external display devices	Mode	Max. resolution	Max. refresh rate	Max. USB speed	Max. Ethernet speed
1	SuperSpeed 	1920 x 1200	60 Hz	5 Gbit/s	1 Gbit/s
		2048 x 1536	60 Hz		
		4096 x 2160	30 Hz		
1	Dual 4K 	1920 x 1200	60 Hz	480 Mbit/s	100 Mbit/s
		2048 x 1536	60 Hz		
		4096 x 2160	60 Hz		
2	SuperSpeed 	1920 x 1200	60 Hz	5 Gbit/s	1 Gbit/s
		2048 x 1536	30 Hz		
2	Dual 4K 	1920 x 1200	60 Hz	480 Mbit/s	100 Mbit/s
		2048 x 1536	60 Hz		
		4096 x 2160	30 Hz		

To check the screen resolution of your **display device** and adapt it via your **device's** operating system (see: [4.9 Configuring your display device](#)).

Take note: Check the specifications of your **display devices** and your **device**. These specifications may not exceed the maximum screen resolution and USB/Ethernet speeds.

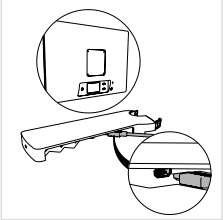
Take note: If you have two **4K display devices**, set **Link** to the **dual 4K mode** and not the **SuperSpeed mode**. In **SuperSpeed mode**, the restrictions in your **device's** operating system will prevent it from functioning. This can be remedied by disconnecting the **device**, switching to **dual 4K mode** and reconnecting the **device** to **Link**.

4.2 Connecting a display device

You can connect one or two **display devices** to **Link** via the two **HDMI ports** (see table 2.2) on the back of **Link**.

Take note: If your **display device** does not have an HDMI connection, you can easily convert your VGA, DVI or display **port** connection to HDMI.

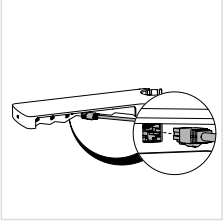
See section [4.1 Selecting the desired mode](#) for screen resolution options.



4.3 Connecting to a network

You can connect **Link** to a network or the Internet via the RJ-45 Gigabit Ethernet **port** (See table 2.2) on the back of **Link**.

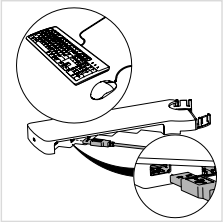
Take note: Use a CAT5 or newer Ethernet cable with RJ45 connection to take advantage of all the possibilities offered by **Link**.



4.4 Connecting USB 2.0 peripheral equipment

You can connect **peripheral equipment** to **Link** via the two **USB 2.0 ports** (see table 2.2) on the back of **Link**. The **USB 2.0 ports** support **HighSpeed** rates and a power output of 2.5 watts.

Take note: Make sure the **peripheral equipment** is compatible with the performance specifications of **Link**.



4.5 Connecting USB 3.1 peripheral equipment

You can connect **peripheral equipment** to Link via the two USB 3.1 **ports** (see table 2.1) on the front of Link. The USB 3.1 **ports** support **SuperSpeed** rates and a power output of 10 watts.

Take note: Make sure the **peripheral equipment** is compatible with the performance specifications of Link.

4.6 Connecting to the power supply

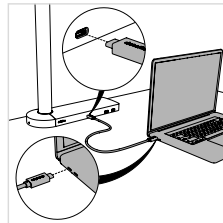
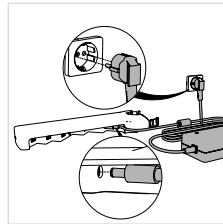
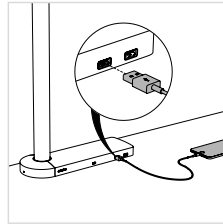
Use the adapter and cable provided to connect Link to the power supply (see table 2.2). When connected to the power supply, Link will automatically switch on (to stand-by). You can switch off Link completely by disconnecting it from the power supply.

4.7 Connecting your device

You can connect your **device** to Link via the USB-C **port** (see table 2.1) on the front of Link. Your **device** can now take advantage of all the possibilities offered by Link.

Connecting and disconnecting: The **device** can be connected to Link or disconnected from Link, regardless of whether Link and the **device** are switched on or off.

Take note: Not all USB-C cables support the USB 3.1 Gen 1 standard. It is possible that these cables do not support data, visual information and power transfer. Dataflex therefore recommends using the included Dataflex USB-C cable to connect your **device** to Link. This ensures the best possible use of all the possibilities offered by Link in combination with your **device**.



4.8 Connecting security devices

It is possible to attach Link to your desk using a Kensington lock (not included) (see table 2.3). See the lock manual for more information.

4.9 Configuring your display device

You can configure the **display device** you have connected in your **device's** operating system. This manual contains general instructions for the two most common operating systems.

4.9.1 Windows

Use Windows to configure the display on one or two **display devices** connected to Link.

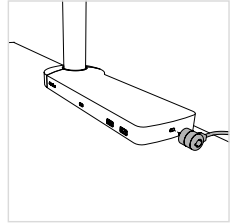
Right-click on the desktop and select screen resolution.

In this window, select the desired resolutions.

You have three options for configuring your screens:

- 1) Setting an external **display device** as the main screen.
- 2) Setting external **display devices** as an extension of the main screen (expand main screens).
- 3) Setting external **display device** as a duplicate of the main screen (duplicate main screens).

Tip: You can also open the screen settings by holding down Windows+P.



4.9.2 macOS

Use macOS to configure the display on one **display device** connected to **Link**.

In the Apple menu, select the option System preferences and then select the Screens tab. In this window, select the desired resolution for the **display device**. Click on the Arrangement tab and make sure that the Mirror displays checkbox is not selected if you do not want to duplicate the screen.

A window will appear on the external **display device** with the corresponding settings.

5. Technical support and guarantee

5.1 Troubleshoot

5.1.1 Common usage and connection problems

Problem	Possible cause	Solution
The Link ports do not work.	Link is not connected to the power supply.	Connect the adapter and cord included to Link and to a power outlet.
	Link is not connected properly to the device.	Disconnect the USB-C cable from the device and reconnect it.
A USB port on Link is switched off.	The USB device connected to the Port may not be compatible to the performance specifications of Link.	Do the following to switch on the Port again: Disconnect the adapter and cable from Link and reconnect it. - or - Disconnect the Link USB device and reconnect it. Use a device that is compatible with Link or select a different Port, one that is compatible with the performance specifications for your device (see tables 2.1 and 2.2).
The USB-C input has a slow connection.	The dual 4K/SuperSpeed switch is not in the right position.	Check whether the switch on the back of Link (see: table 2.2) is set to dual 4K or SuperSpeed. If necessary, switch to SuperSpeed for 5Gbit/s speed. (See: 4.1 Selecting the desired mode).

5.1.2 Video/audio problems

Problem	Possible cause	Solution
Fonts and other characters are displayed in large size on the external display device .	The screen resolution is not configured properly.	Set the screen resolution to the same or lower than the maximum limit (see 4.9 Configuring your display device).
The letters on the external display device are too small.	The settings for the operating system's screen resolution are set to 100% by default.	Change the font size on your device . Windows: Go to the Configuration screen > Display settings to change the font size. macOS: Go to the System preferences > Display screen to change the font size.
The connected display device shows a black screen.	The drivers or BIOS are outdated.	Make sure your drives and BIOS are updated with software from your device's manufacturer. (See 3. Before use)
	The USB-C cable does not support the screen.	Use the included Dataflex USB-C cable (58.083).
	Screen software does not recognise the external display device .	Make sure your screen software is up-to-date and runs on software from your device's manufacturer. (See 3. Before use)
	You do not have a Kaby Lake (generation 7) processor or higher.	See 1.3 Laptop check .
The external display device does not display the desired resolution.	The dual 4K/SuperSpeed switch is not in the right position.	Check whether the switch on the back of Link (see table 2.2) is set to dual 4K or SuperSpeed . (See: 4.1 Selecting the desired mode).
	The screen resolution is not configured properly.	Set the screen resolution to the same or lower than the maximum limit (see 4.9 Configuring your display device).
No sound can be heard via the display device .	Your HDMI cable does not meet the required standard.	Use certified HDMI 1.4 cables.

5.2 Specifications

5.2.1 Dimensions and weight

Width: 315 mm (12,4 inches)
Depth: 110 mm (4,3 inches)
Height: 32 mm (1.3 inches)
Weight: 0.5 kg (1.1 lb)

5.2.2 Interface

1x USB 3.1 Gen 1 Type C
2x USB 3.1 Gen 1 Type A
2x USB 2.0 Type A
2x HDMI
1x Gigabit Ethernet

5.2.3 Power

AC input: 100V-240V
DC output: 24V/3,75A, 90W

5.2.4 Energy consumption

Stand-by: 2W
On: max. 90W

5.2.5 System requirements

Windows 10 and newer
Apple macOS Version 10.12 (Sierra) and newer

5.2.6 Environment

Operating temperature and humidity level:

- 0°C ... +40°C
- 20 ... 80% Relative humidity without condensation (standard)

Storage temperature and humidity level:

- 10... 90% Relative humidity without condensation
 - -15°C ... +50°C
- Maximum height:
- In use: 2,000 m
 - In storage: 12,000 m (airplane)

5.2.7 Certification

CE

- 2014/35/EU: CE standard for low-voltage material
- 2014/30/EU: CE standard for electromagnetic compatibility

USB compliance testing:

- USB Type C
- USB PD (Power delivery)
- USB SuperSpeed HUB
- Displayport Alt Mode for USB type-C compliance test.

HDMI 1.4 and Ethernet

- HDMI Source PHY Electrical
- Gigabit Ethernet PHY Electrical (1000Base-T)

5.3 Guarantee information

This document contains important information about the product; it should be read in its entirety before further unpacking, installing or using the product. Failure to follow the instructions in this document can lead to serious personal injury or material damage.

Guarantee Terms and Conditions

The guarantee certifies solely that DFX will replace any product with an equivalent or repair product at its own cost if it ceases functioning within a two-year period after purchase ('the guarantee').

The guarantee is void if (i) the defect appears to be due to gross negligence or to the product not being used for its intended purpose, (ii) no proof of purchase can be provided by request of DFX or (iii) it appears that the Guarantee & Safety, Installation and Operating Instructions have not been followed.

The guarantee is limited exclusively to the aforementioned. Specifically, the guarantee should not be interpreted as acceptance of any liability of DFX which does not exist under the current laws and regulations.

5.4 Contact

Contact details

support@dataflex-int.com

www.dataflex-int.com/en/link/FAQ